

Forward Mississippi

Forward Mississippi is a joint effort by four Mississippi counties:

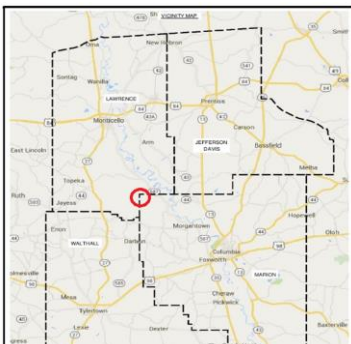
Lawrence

Jefferson Davis

Walthall

Marion

The MEGA SITE is primarily located in Marion County with a portion extending into Lawrence County. The histories of the four-counties overlap - a large portion of Jefferson Davis was once Lawrence County and parts of Lawrence County were once Marion, and the same is the case with a large portion of Walthall.



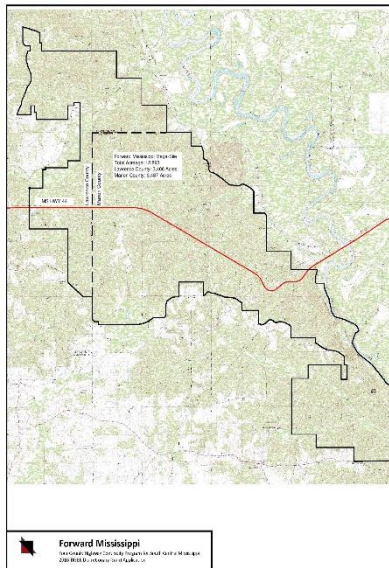
Lawrence, Jefferson Davis (left – right, top) Walthall, Marion (left-right, bottom)

www.forwardmississippi.com

601.736.6385



MS HWY 44 CROSSING THE PEAR RIVER. A FUTURE PHASE OF THE PROJECT WILL COMPLETE THE CONNECTION BETWEEN MS HWY 27 AND MS HWY 13 CREATING AN ADDITIONAL EAST-WEST THOROUGHFARE THROUGH THIS PART OF THE STATE.



MEGA SITE
 CONSISTING OF
 NEARLY 13,000 ACRES
 OF ONE-OWNER
 OPEN LAND WITH
 RAIL, WATER, POWER,
 HIGH-PRESSURE
 NATURAL GAS, AND
 MINUTES FROM A
 FOUR-LANE
 HIGHWAY.
 ENVIRONMENTALS
 COMPLETED ON
 MUCH OF THE SITE.

Conveniently located in the geographic center of south central Mississippi. Over 400,000 people are within a 50-minute driving distance (500,000 including the Louisiana Northshore area).

